

Из-под Дуба

Русская народная песня (фрагмент)

Бл. Фл. 1
Гобой

Блок
флейта 2

Рожок
сопрано

Рожок
альт

Рожок
тенор

2/4

Detailed description: This system contains five staves of music. The top staff is for the 1st Bass Flute/Oboe (Бл. Фл. 1 / Гобой). The second staff is for the 2nd Block Flute (Блок флейта 2). The third staff is for the Soprano Horn (Рожок сопрано). The fourth staff is for the Alto Horn (Рожок альт). The fifth staff is for the Tenor Horn (Рожок тенор). All staves are in 2/4 time and feature a melodic line with various rhythmic patterns, including eighth and sixteenth notes, and rests.

10

Гоб.

фл.

Р.с

Р.а

Р.т

Detailed description: This system contains five staves of music, starting at measure 10. The staves are labeled: Гоб. (Oboe), фл. (Block Flute), Р.с (Soprano Horn), Р.а (Alto Horn), and Р.т (Tenor Horn). The music continues with the same melodic themes as the first system, with some staves showing more complex rhythmic patterns and accents. The system concludes with a double bar line.

Из-под Дуба

Гобой

The first staff of music is for the flute, labeled 'Гобой'. It begins with a treble clef and a 2/4 time signature. The melody starts with a quarter note G4, followed by a quarter note A4, and then a half note B4. The next measure contains a quarter note A4, a quarter note G4, and a quarter note F4. The third measure has a quarter note E4, a quarter note D4, and a quarter note C4. The fourth measure features a quarter note B3, a quarter note A3, and a quarter note G3. The fifth measure contains a quarter note F3, a quarter note E3, and a quarter note D3. The staff ends with a double bar line.

6

The second staff of music, starting at measure 6, continues the melody. It begins with a quarter note C3, a quarter note D3, and a quarter note E3. The next measure has a quarter note F3, a quarter note G3, and a quarter note A3. The third measure contains a quarter note B3, a quarter note A3, and a quarter note G3. The fourth measure features a quarter note F3, a quarter note E3, and a quarter note D3. The fifth measure has a quarter note C3, a quarter note B2, and a quarter note A2. The staff ends with a double bar line.

10

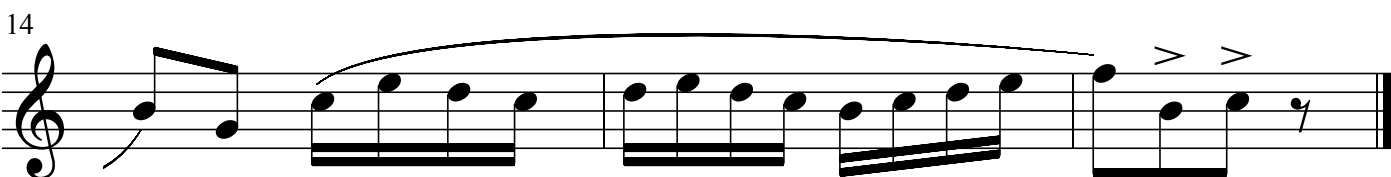
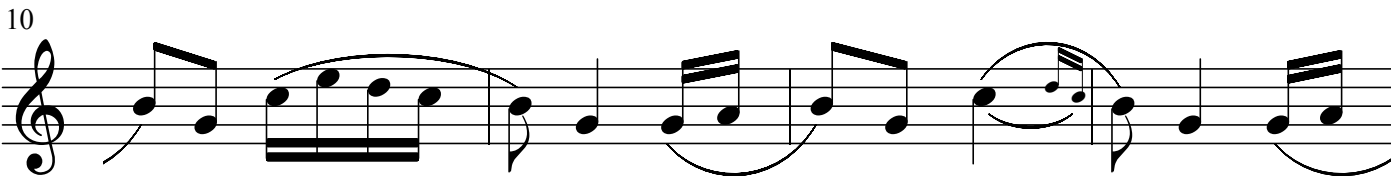
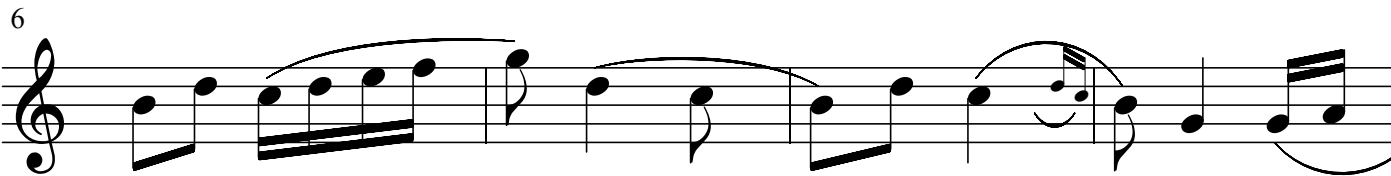
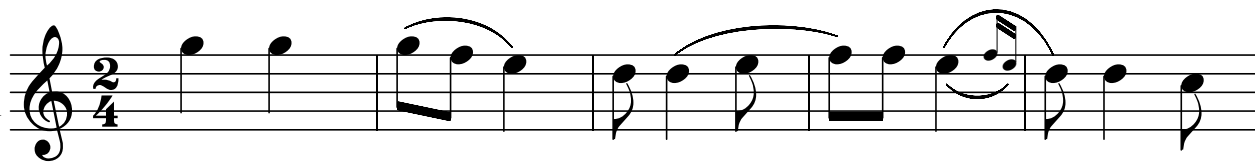
The third staff of music, starting at measure 10, continues the melody. It begins with a quarter note G2, a quarter note F2, and a quarter note E2. The next measure has a quarter note D2, a quarter note C2, and a quarter note B1. The third measure contains a quarter note A1, a quarter note G1, and a quarter note F1. The fourth measure features a quarter note E1, a quarter note D1, and a quarter note C1. The fifth measure has a quarter note B0, a quarter note A0, and a quarter note G0. The staff ends with a double bar line.

14

The fourth staff of music, starting at measure 14, continues the melody. It begins with a quarter note F0, a quarter note E0, and a quarter note D0. The next measure has a quarter note C0, a quarter note B0, and a quarter note A0. The third measure contains a quarter note G0, a quarter note F0, and a quarter note E0. The fourth measure features a quarter note D0, a quarter note C0, and a quarter note B0. The fifth measure has a quarter note A0, a quarter note G0, and a quarter note F0. The staff ends with a double bar line.

Из-под Дуба

Блок
флейта 1



Из-под Дуба

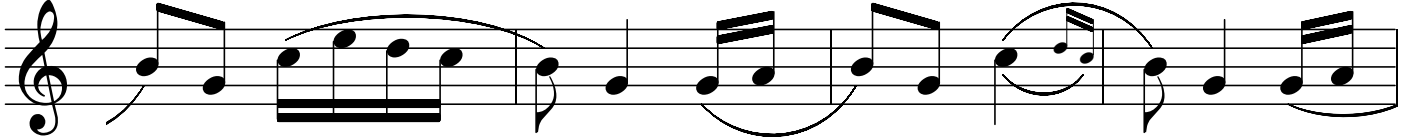
Блок
флейта 2



6



10



14



Из-под Дуба

Рожок
сопрано

Measures 1-5 of the musical score for Soprano Clarinet. The time signature is 2/4. The melody starts with a quarter note, followed by a quarter note, then a quarter note with a slur over it, and continues with eighth notes and quarter notes.

6

Measures 6-10 of the musical score. Measure 6 starts with a quarter note, followed by a quarter note, then a quarter note with a slur over it, and continues with eighth notes and quarter notes.

10

Measures 11-14 of the musical score. Measure 11 starts with a quarter note, followed by a quarter note, then a quarter note with a slur over it, and continues with eighth notes and quarter notes.

14

Measures 15-18 of the musical score. Measure 15 starts with a quarter note, followed by a quarter note, then a quarter note with a slur over it, and continues with eighth notes and quarter notes. The piece ends with a double bar line.

Из-под Дуба

Рожок
альт

The first staff of music is written in treble clef with a 2/4 time signature. It contains 14 measures of music. The notes are: G4, A4, B4, C5, B4, A4, G4, F4, E4, D4, C4, B3, A3, G3. There are slurs under the first four notes, the next four notes, and the last four notes.

6

The second staff of music is written in treble clef and contains 8 measures of music. The notes are: G4, A4, B4, C5, B4, A4, G4, F4, E4, D4, C4, B3, A3, G3. There are slurs under the first four notes, the next four notes, and the last four notes.

10

The third staff of music is written in treble clef and contains 8 measures of music. The notes are: G4, A4, B4, C5, B4, A4, G4, F4, E4, D4, C4, B3, A3, G3. There are slurs under the first four notes, the next four notes, and the last four notes.

14

The fourth staff of music is written in treble clef and contains 8 measures of music. The notes are: G4, A4, B4, C5, B4, A4, G4, F4, E4, D4, C4, B3, A3, G3. There are slurs under the first four notes, the next four notes, and the last four notes. There are also accents (>) under the last two notes of the staff.

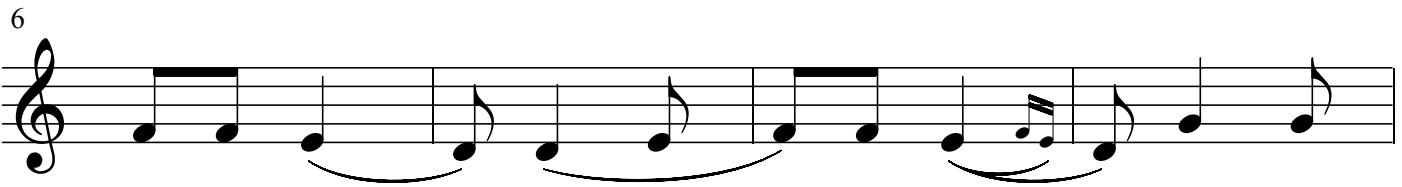
Из-под Дуба

Рожок
тенор

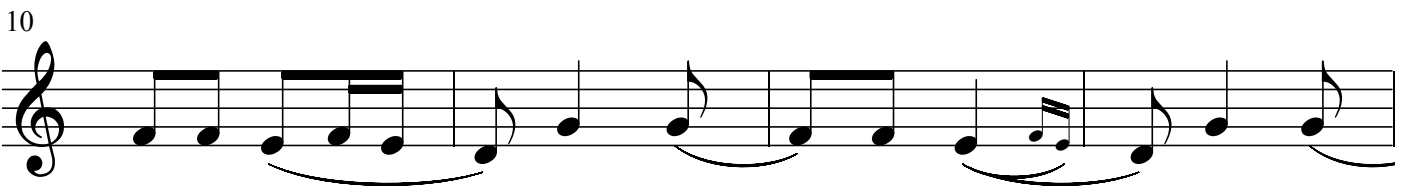


5

6



10



14

